

„REURIS“

REVITALIZATION OF URBAN RIVER SPACES

Brno pilot project

REVITALIZATION OF OLD PONÁVKA RIVER

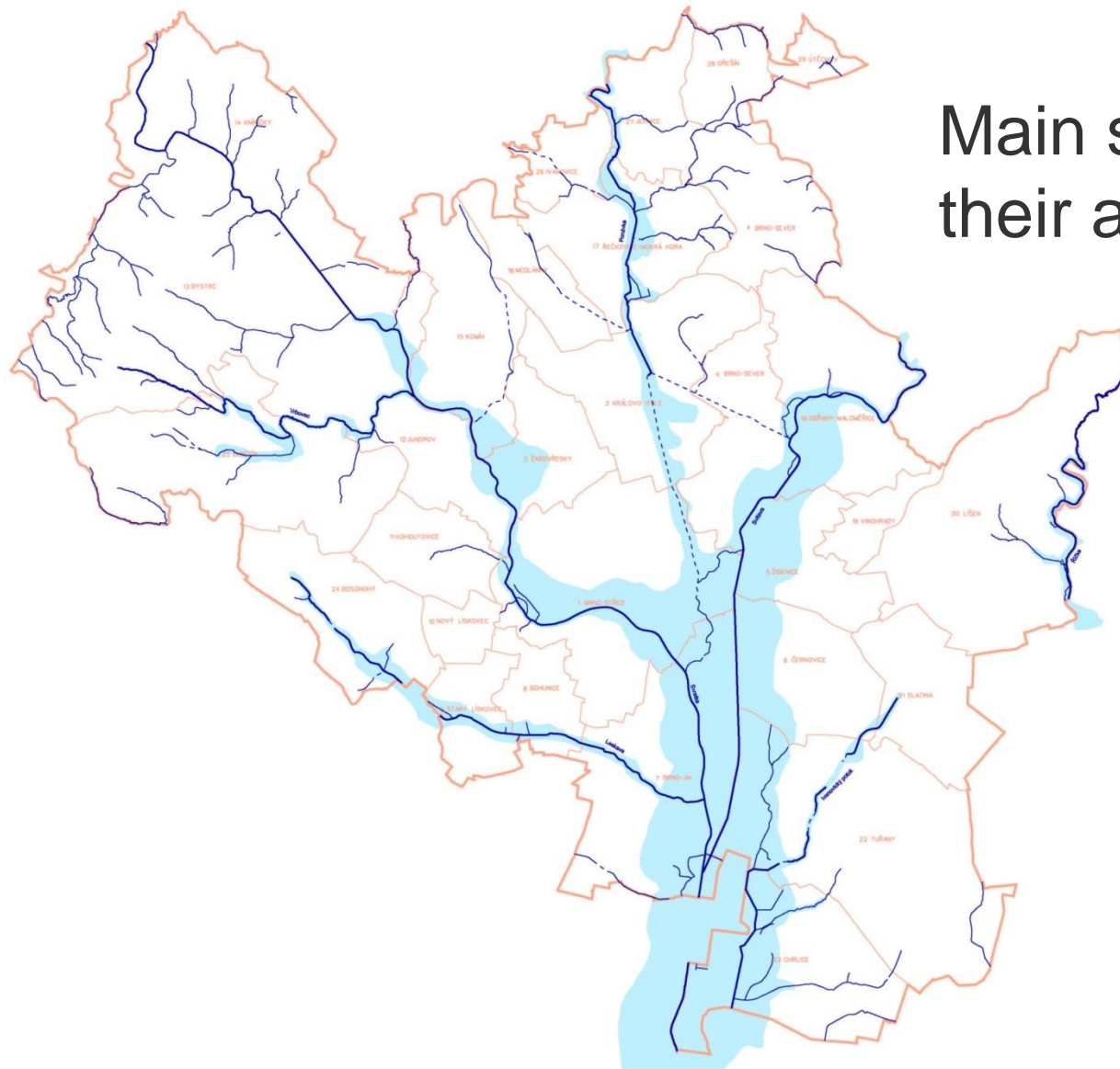
Bydgoszcz, 9th November 2011



EUROPEAN UNION
EUROPEAN REGIONAL
DEVELOPMENT FUND



This project is implemented through the CENTRAL EUROPE Programme co-financed by the ERDF.

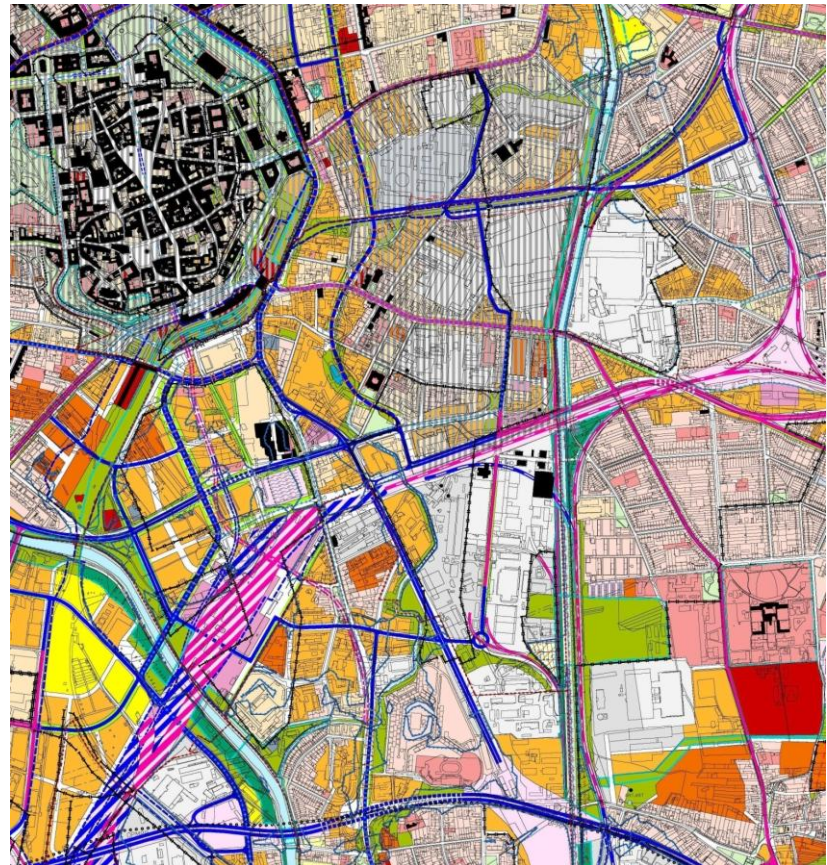


Main streams and their alluvial plains



Old Ponávka (Svitavský náhon)

Master Plan



Basic information:

- artificial water stream but in ancient natural riverbeds
- origin: 13th century
- length: 3,67 km
- pouring through industrial zones in the north and in the south through residential and mixed areas
- in the past it was source of water for surrounding factories

Positive aspects +

- connects Svitava with Svratka
- close to city center
- zone in transformation
- big potential for city improvement

Negative aspects –

- stream in unsuitable condition
- partly covered
- old industrial zone (BF)
- problems with water quality

Reasons for choosing Old Ponávka River as pilot project:

- last conserved mill-race in the **proximity of historical city center**
- historical reminder of water in the past in Brno
- connects Svitava with Svratka – **new connecting element** in the territory for pedestrians and cyclists
- **zone in transformation** (old industrial areas) - big **potential** for revitalization of wider area (increasing attractiveness, quality of living and working conditions)
- conception of revitalization **grounded in Master Plan** of Brno
- new green axes in the Brno **system of green spaces**

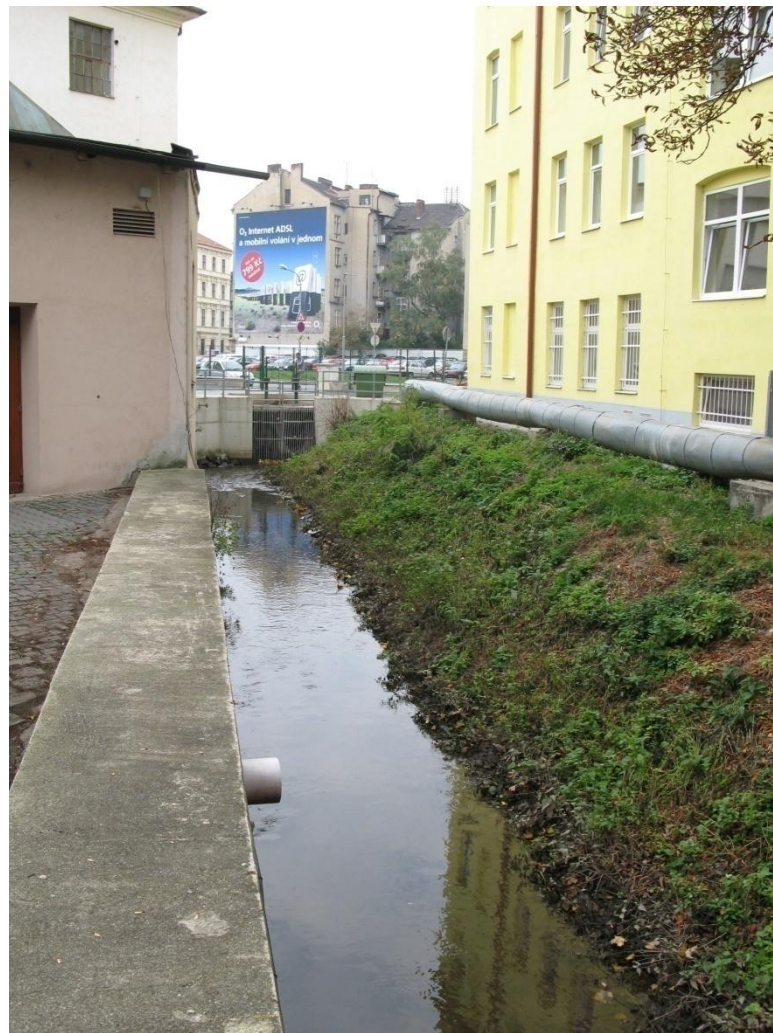
Old Ponávka River

B | R | N | O



Old Ponávka River

B | R | N | O







Old Ponávka River

B | R | N | O





Old Ponávka River

B | R | N | O



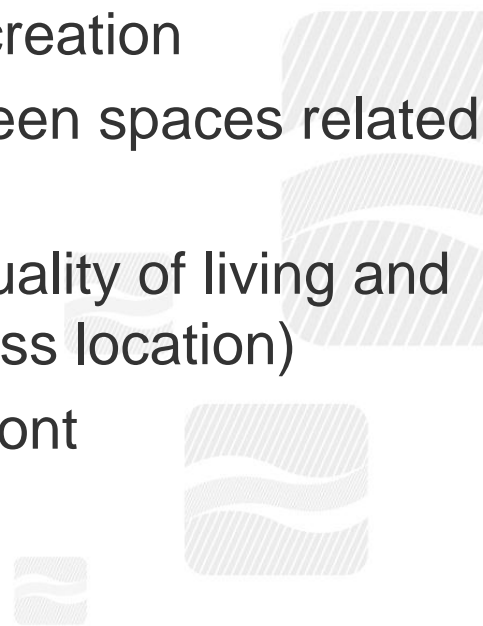




Objectives:

- complex preparation of revitalization of Old Ponávka and its surroundings
- transformation of Old Ponávka river in a blue-green axis integrated in the urban structure of the city
- we expect to take use of verified procedures and experience acquired within this project in revitalization of other urban river spaces of Brno

Expected positive impacts:

- connection for pedestrians and cyclists between Svitava and Svratka rivers
 - new connecting element between city center and country-side
 - creation of new conditions for leisure and recreation
 - building-up of connected system of public green spaces related with water stream
 - revitalization of wider area (attractiveness, quality of living and working conditions, strengthening of business location)
 - ecological reactivation of river and its waterfront
 - allowing public access to river banks
 - rise of public awareness of the problematic
- 

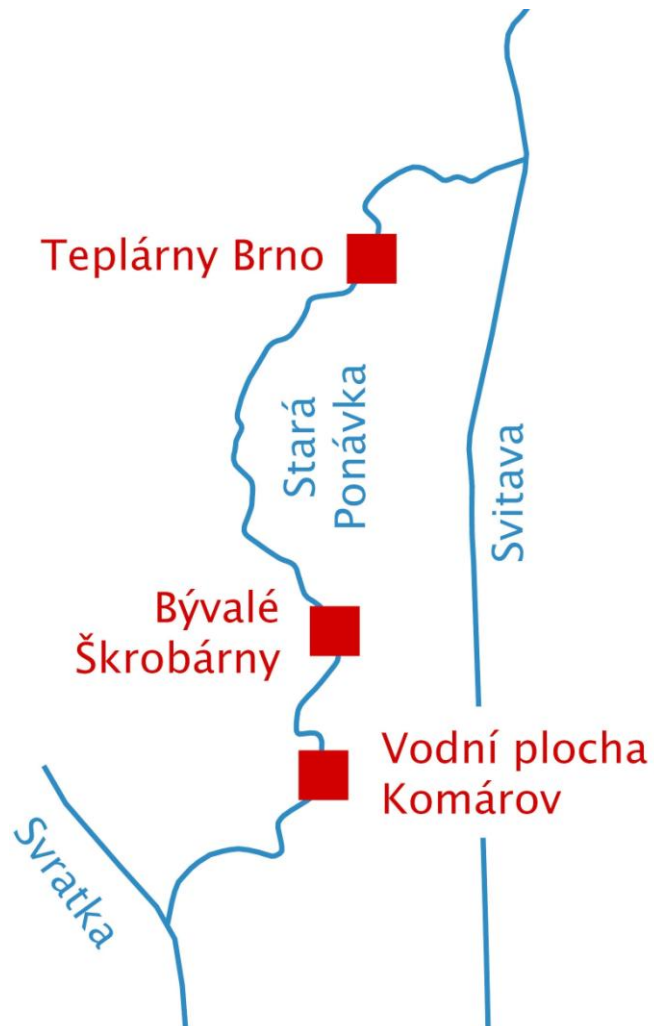
COMPLEX REVITALIZATION STUDY

(completed VI.10)

- Complex Revitalization Study of Old Ponávka is the **main output** of the Brno pilot action.
- The **aim** of the Study is a complex proposal of revitalization measures on the water stream of Old Ponávka with its surroundings and its integration in the city life.
- The team elaborating the Study was composed of architects - town planners, revitalization - water management specialists, landscape architects and transport specialist.

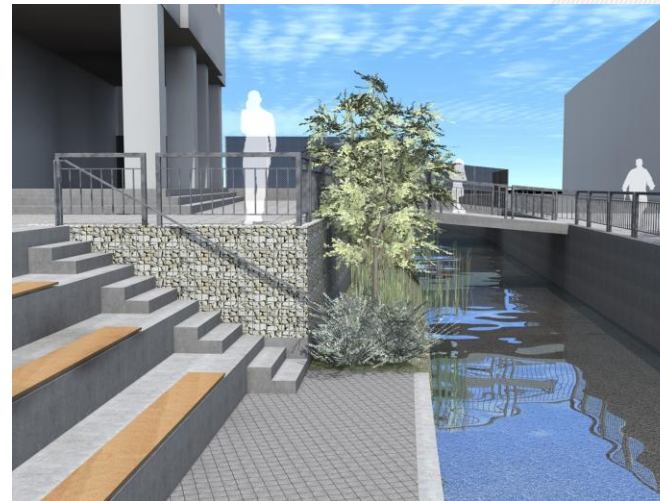


Detailed project documentations of selected localities



Detailed project documentations of selected localities

TEPLÁRNY



Detailed project documentations of selected localities

ŠKROBÁRNY



Detailed project documentations of selected localities

KOMÁROV



We have:

- Complex project documentation with the proposal for revitalization
- City of Brno became the administrator of the bigger part of the stream
- Local stakeholders involved
- Public awareness of the project
- **Vision** of revitalization grounded in Master Plan of Brno

Next steps:

- Realization of the revitalization in the 3 selected localities
- Long-term gradual realization in other sections of the stream

Conditions:

- Finding **financial sources** for realization out of the city budget is essential for successful achievement of the project due to the economic situation of the city
- Motivation of private investors to take part on the realization
- Continuous solution of property relations
- **Keeping the vision** in the long term !

Thank you for your attention

B | R | N | O

www.reuris.gig.eu

www.ponavka.brno.cz

Ing. Hana Bernardová

Municipality of Brno

Urban planning and Development Department

bernardova.hana@brno.cz



EUROPEAN UNION
EUROPEAN REGIONAL
DEVELOPMENT FUND

