

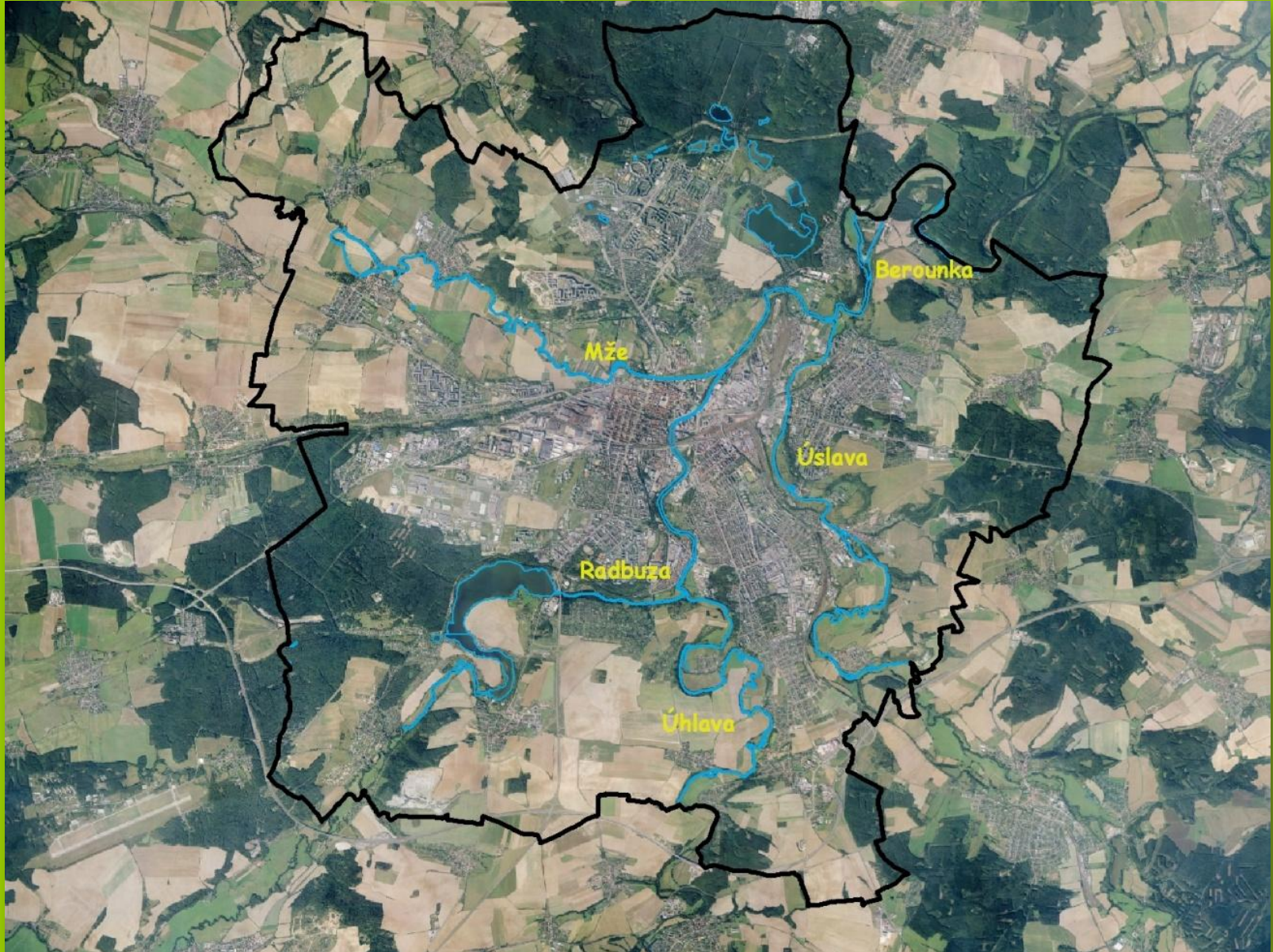
Revitalisation of Rivers in the city of Pilsen

Urban Planning and Development Institute
of the City of Pilsen

Ing. Pavlína Valentová
project manager

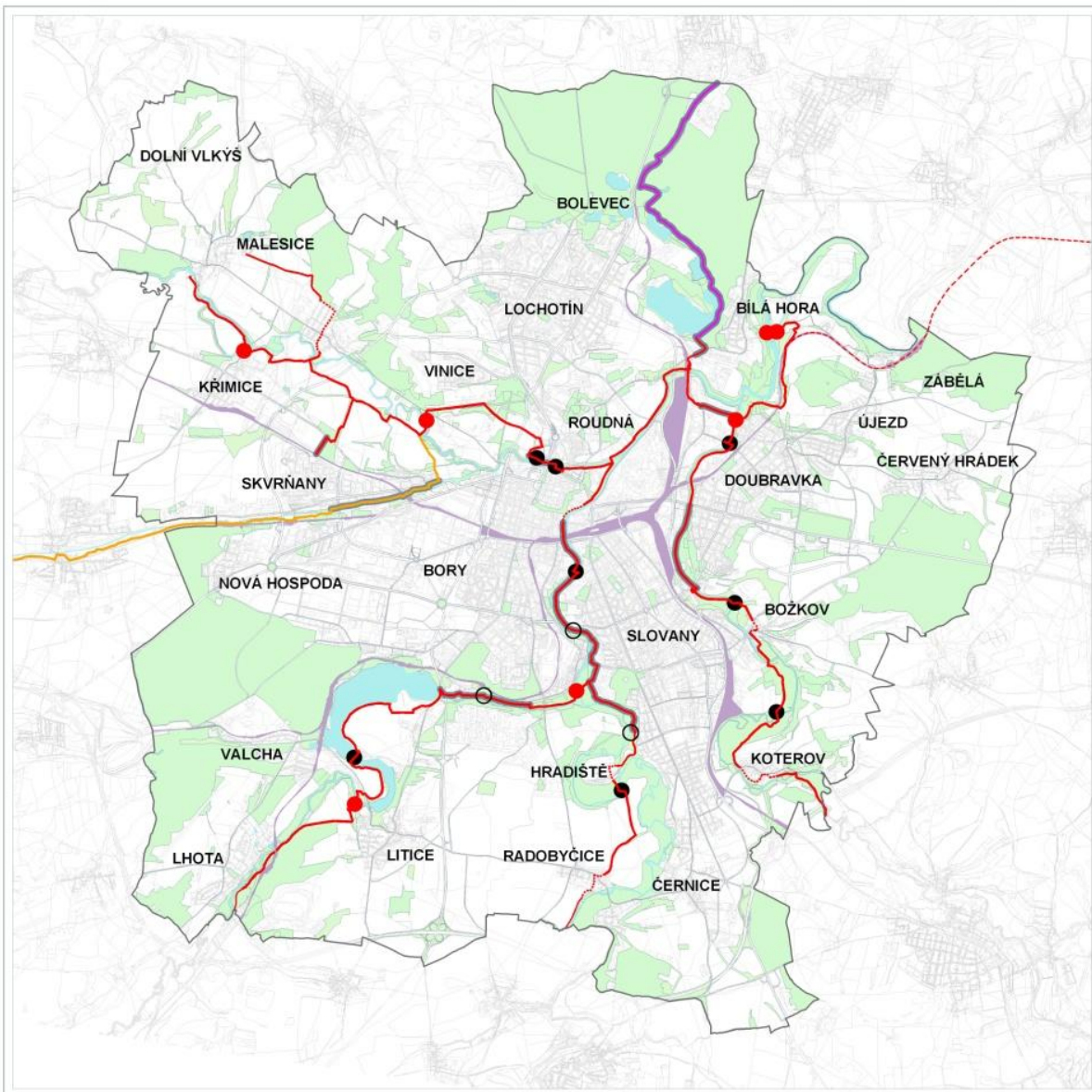
Bydgoszcz 9. 11. 2011

Pilsen – the city at the confluence of four rivers





The Sport and Recreational Path System in Pilsen



PILSEN SPORT AND RECREATIONAL PATHS - GREENWAYS

OVERVIEW SITUATION

SCALE 1 : 25.000



LEGEND

- SPORT AND RECREATIONAL PATHS IN THE PILSEN RIVER VALLEYS - GREENWAYS
- SPORT AND RECREATIONAL PATH - GREENWAYS IN BOLEVECKÉ POND'S LOCALITY
- SPORT AND RECREATIONAL PATH - GREENWAYS IN NEARBY STREAM VALLEY
- SUBJECT OF THE FURTHER DEVELOPMENT OF GREENWAYS USING OF VACATE RAILWAY LINE DOUBRAVKA - CHRAST
- STAGES RUNNING THROUGH THE BUILT-UP AREAS
- ADAPTED STAGES
- AREAS OF LANDSCAPE GREENERY
- AREAS OF RAILWAY TRANSPORT
- WATER AREAS
- REALISED FOOTBRIDGES ON THE ROUTES - GREENWAYS
- REALISED FOOTBRIDGES ON THE CROSSWISE CONNECTION
- PROPOSED FOOTBRIDGES





- following the previously drafted conceptual design for sport and recreational paths in the river valley (greenways)
- first of the series of conceptual designs which should become a land use planning policy document
- categorisation of relax places and information points along the greenways in Pilsen's river valleys



- detailed localisation of each relax place (aim for position on municipal estates)
- identical graphical concept for information points and educational boards in the river valleys
- modification of Pilsen s river valleys for representative and pleasant urban space
- nature and river landscape protection and flood control measures in the rural zone

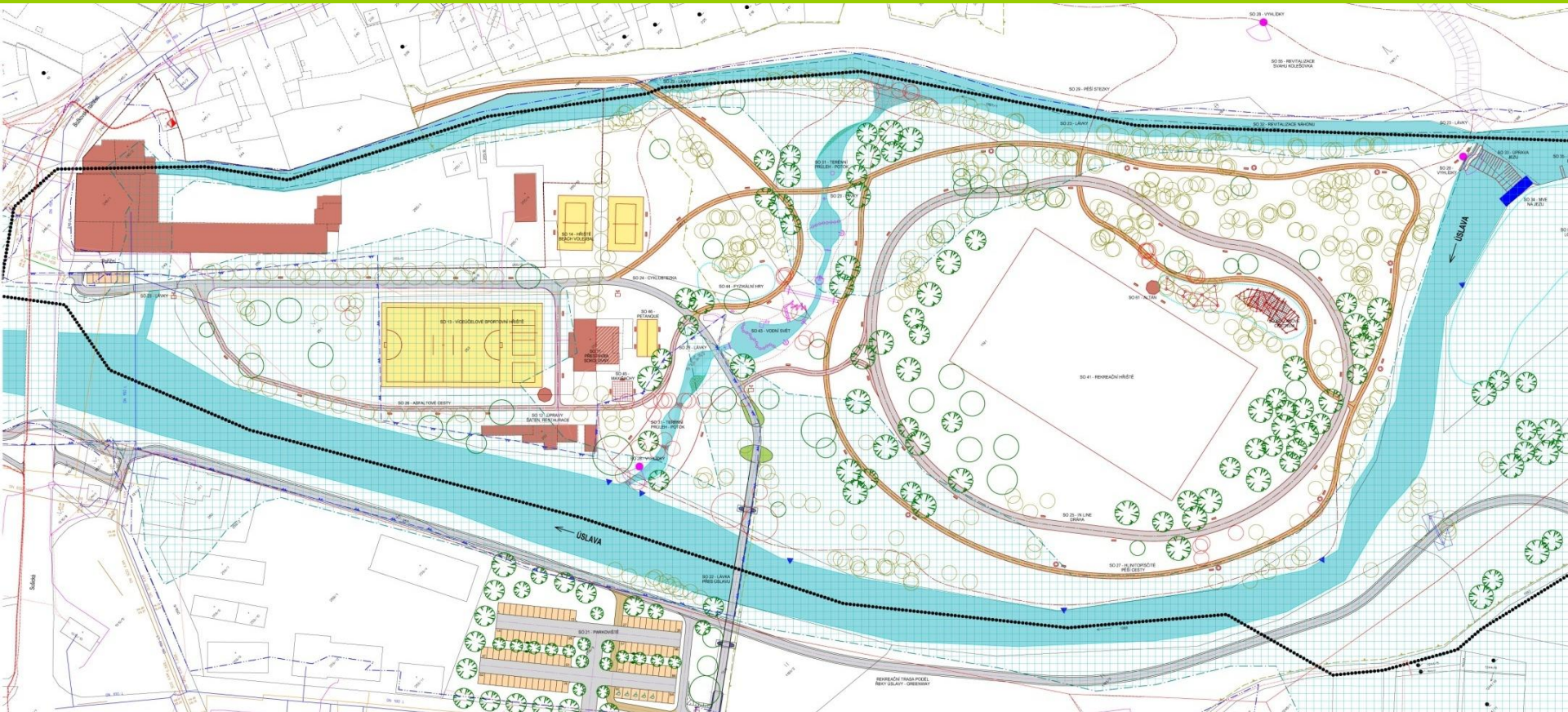


- an area with great potential for sport and recreation linked to the cycling paths along the Úslava
- a detailed land-use study proposes an architectural and landscaping solution
- the possibility of relieving the mill race during floods by means of a bypass canal running across the island back to the Úslava

Bydgoszcz 9. 11. 2011







Bydgoszcz 9. 11. 2011

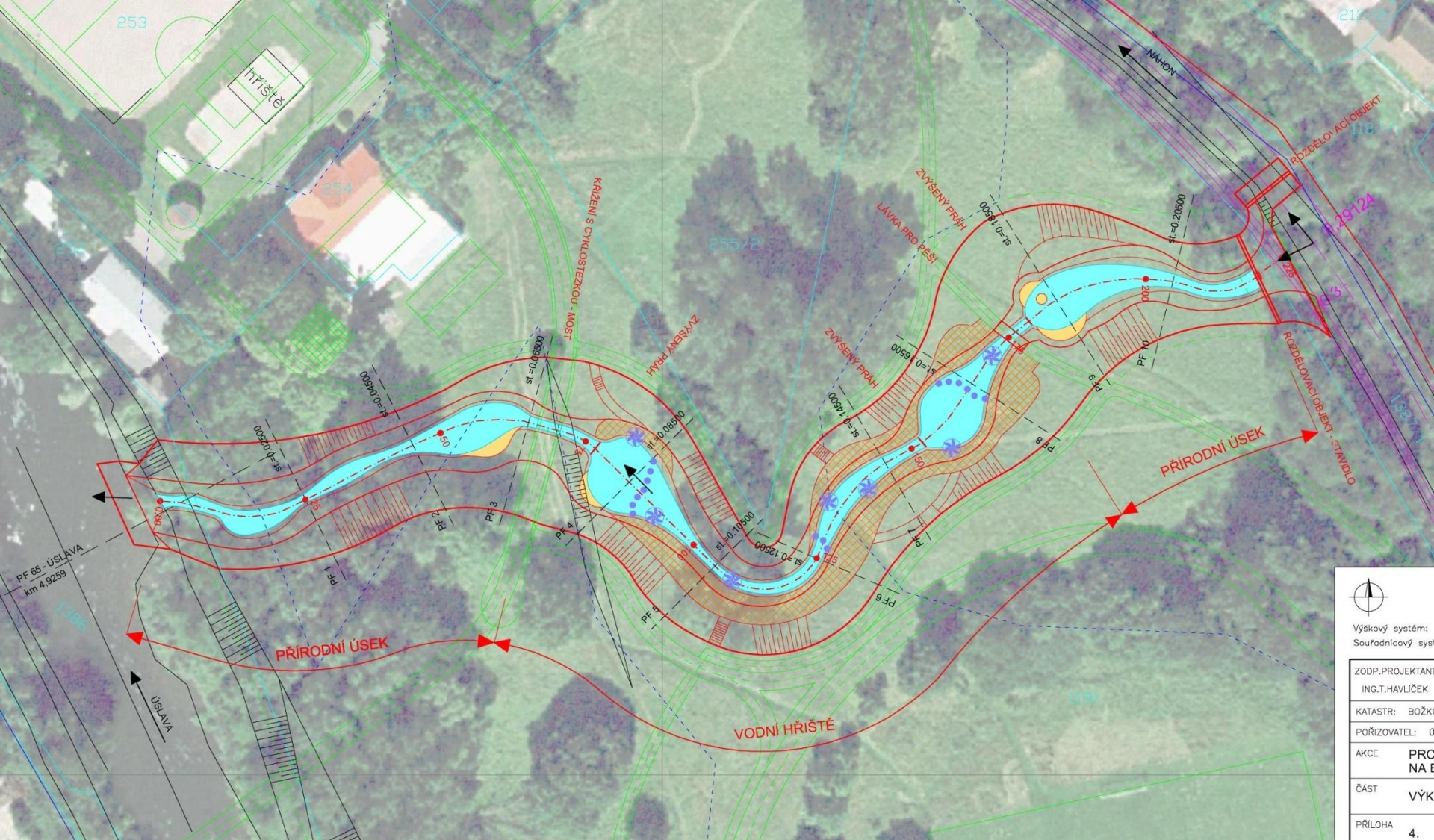


EUROPEAN UNION
EUROPEAN REGIONAL
DEVELOPMENT FUND

Study the new terrace and drainage canal



The new terrace and drainage canal - Detail



Výškový systém:
Souřadnicový systém:

ZODP.PROJEKTANT:	ING.T.HAVLÍČEK
KATASTR:	BOŽKOV
POŘIZOVATEL:	00000000
AKCE:	PROJEKT
ČÁST:	VÝKRES
PŘÍLOHA:	4.



Study 2D flood model Božkov Island

five-year flood flow rate Q_5

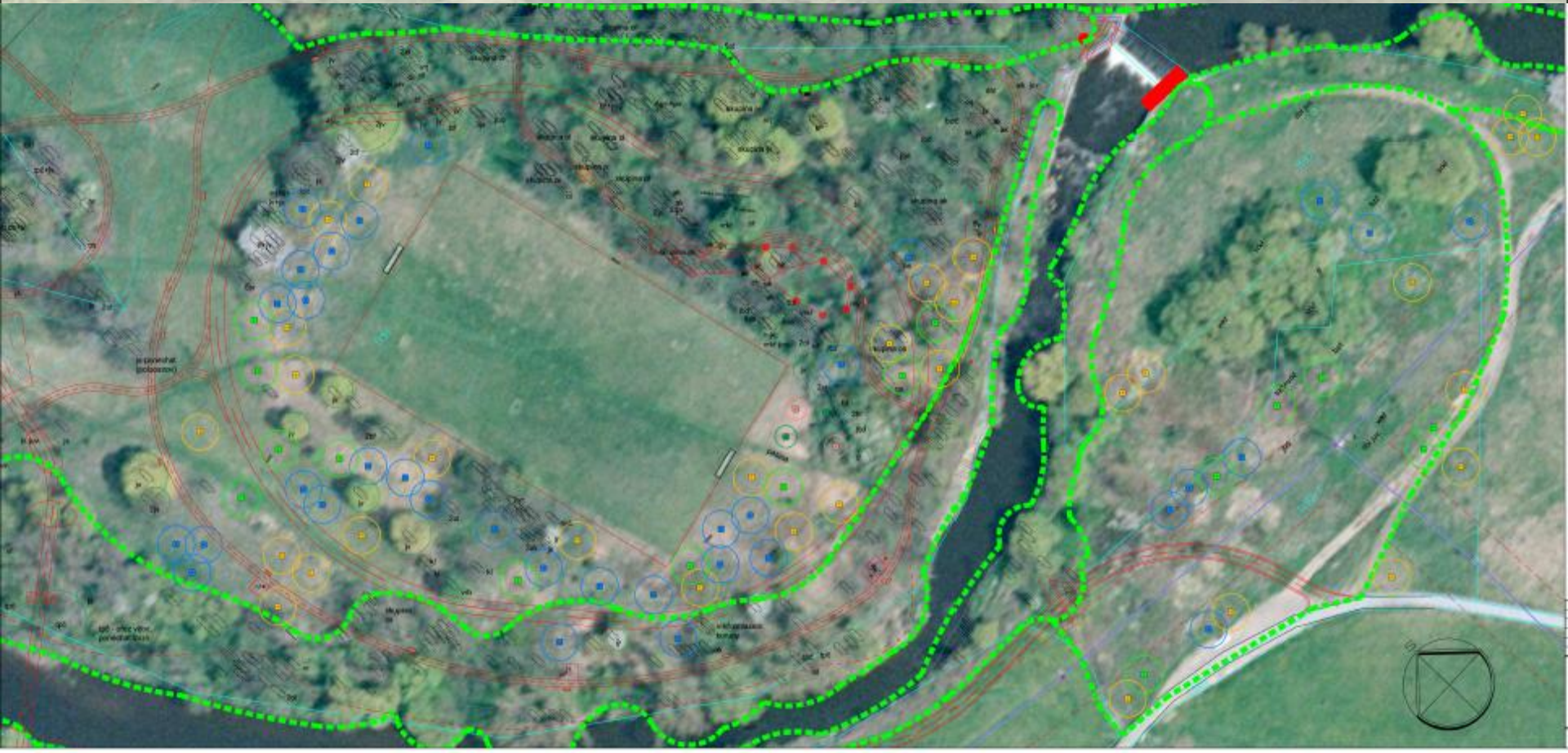


five-year flood flow rate Q5 after realisation of new canal





Vegetation changes on Božkov Island





Vegetation changes on Božkov Island

- Investor - City district
- Subsidy 75% from The Operational Program Environment
- Finished spring 2012

Bydgoszcz 9. 11. 2011



EUROPEAN UNION
EUROPEAN REGIONAL
DEVELOPMENT FUND



Foot paths on Bożkov Island

- Investor - City district
- Subsidy 85% from The Regional Operational Program
- Finished spring 2012

Bydgoszcz 9. 11. 2011



EUROPEAN UNION
EUROPEAN REGIONAL
DEVELOPMENT FUND



Inline skating track on Bożkov Island

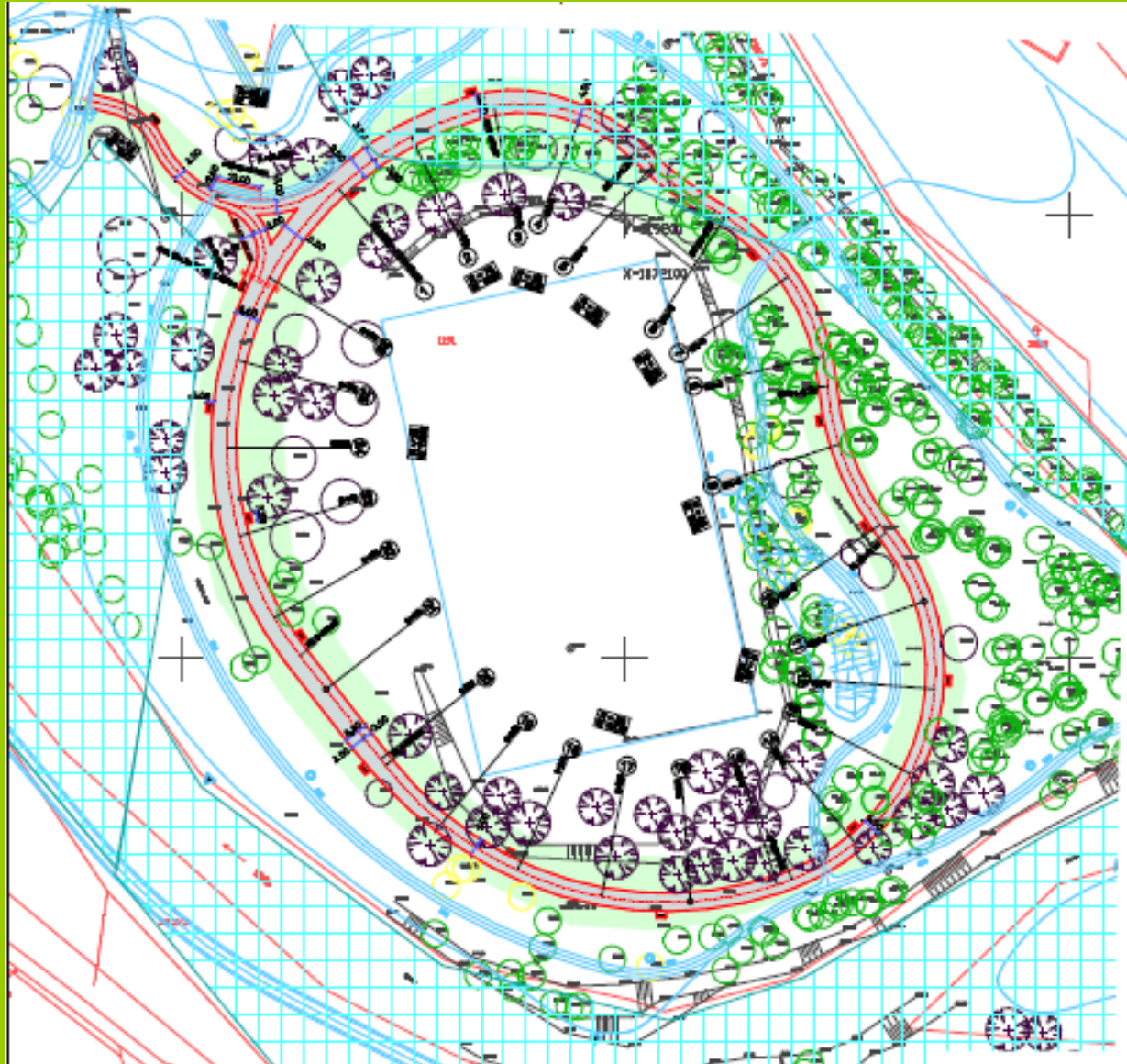
- Investor - City district
- Finished spring 2012

Bydgoszcz 9. 11. 2011



EUROPEAN UNION
EUROPEAN REGIONAL
DEVELOPMENT FUND

Foot paths and in-line skating track on Božkov Island





Educational trail in Úslava river valley

- 9 km long
- 13 information board
- Opened September 2011

Bydgoszcz 9. 11. 2011



EUROPEAN UNION
EUROPEAN REGIONAL
DEVELOPMENT FUND

Educational trail opening



Bydgoszcz 9. 11. 2011



Thank you for your attention!

Bydgoszcz 9. 11. 2011



Ing. Pavlína Valentová
Valentovap@plzen.eu
+420 37 803 5005

Ing. Eva Brejchová
Brejchova@plzen.eu
+420 37 803 5041

**URBAN PLANNING AND DEVELOPMENT INSTITUTE
OF THE CITY OF PILSEN**
www.plzen.eu/ukr
Škroupova 5
305 84 Plzeň
Czech Republic

Bydgoszcz 9. 11. 2011